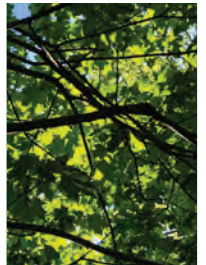




Rural living



Urban Amenities

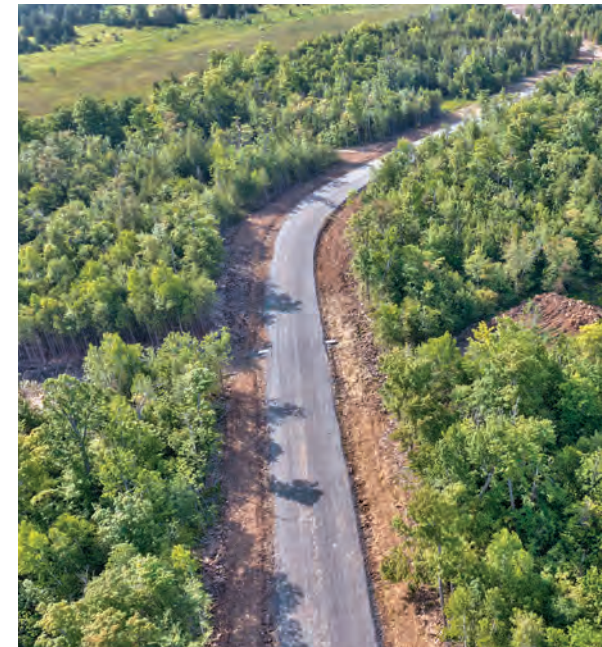


McEwen's Mill: Rural Living, Urban Amenities

McEwen's Mill is an exclusive BLD Homes subdivision of 60 lots, next to 2639 Beckwith 10th Line Carleton Place, ON K7C 0C4, in Beckwith/Carleton Place. It features single-road access to McEwen's Mill and a combination of open and wooded lots tailored to fit our models.

McEwen's Mill is surrounded by a sense of community with that neighbourhood feeling while allowing for privacy and tranquillity that only premium estate lots can offer. Fully treed or cleared, strong sun or passive light, bungalow or 2-storey, there are different lots and models available to suit your preference and needs.

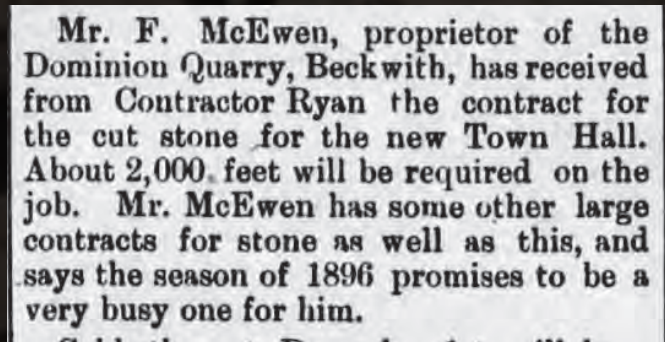
You can enjoy country life with convenience, with stores and many amenities just minutes away, including beautiful, downtown Carleton Place and the renowned Mississippi Lake for boating, fishing, swimming and much more. You can also enjoy a leisurely hike, ATV or Ski-Doo right from your back door via the Ottawa Valley Recreational Trail and indulge in the pleasures of gardening on a spacious and secluded lot. McEwen's Mill is Carleton Place's premier location for estate and luxury living.



History



April 1873



The Lanark Era, Lanark, Ontario, Canada 27 Nov 1895

Special thanks to Beckwith Reeve Richard Kidd, Samantha Rye (Finley McEwen's niece), Finley McEwen and the entire McEwen family, Linda Seccaspina, Marc Steenbakkers, Scott Henderson, Phyllis Byrne and Roy Coker

The land of McEwen's Mill has been used for many purposes. Local legend Finley McEwen operated a sawmill there in 1940. He and his crew took in trees and made and sold lumber and sod for locals. Prior to the mill, Finley McEwen's grandfather Findlay C. McEwen (March 3rd, 1844-June 19th 1922) and his father William H. McEwen (1873-1963) ran a stone quarry there called Dominion Quarry. Findlay, his wife Elexi Duff, his son William, William's wife Ana, and their many Irish immigrant workers quarried stone for building local homes. The workers would use crowbars to lift the stone then chisel it on tables into smaller workable pieces. Stone was quarried for the Churches and Town hall in Carleton Place, then known as Morphy's Falls. The stone was also used for the parliament building in downtown Ottawa and you can see the resemblance between it and downtown Carleton Place. It was taken on the steam engine from Carleton Place to Ottawa on the very trail behind the subdivision. They once took a chunk out that was 15 tons in weight and required a special wagon. It was to be used as a base for a sawmill in Renfrew. Quarrying was big business back then and Finley's grandfather and father had 48 employees working for them digging for stone. The workers were kept fed and hydrated by Finley's Grandmother Elexi and mother Ana. The quarry business ended around 1900 due to the rise in popularity of brick and it being a more inexpensive product to use for building homes. The land was then bought by Lorne McNeely and was ran as a sawmill until Finley bought it back. Finley McEwen was known for miles around for the Mill and we want to keep his family's name cemented in Carleton Place and Beckwith history.



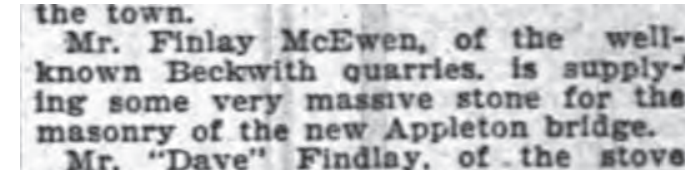
Finley Kearney McEwen 1965



Findlay C McEwen 1844-1922



Carleton Place Town Hall, Built in 1897



The Ottawa Journal Ottawa, Ontario, Canada 7 Oct 1899



Finley Kearney McEwen was 95 in September 2020. He owned the farm that borders the Beckwith airport. He had a brother named Keith and another named Fraser. Finley has one son named Paul. Fraser had no children, but Keith did. Finley was one of the original Beckwith firemen. Finley and his wife Mary have moved to a bungalow off tenth line road. The Finley McEwen mentioned in the ads above was Finley's grandfather.

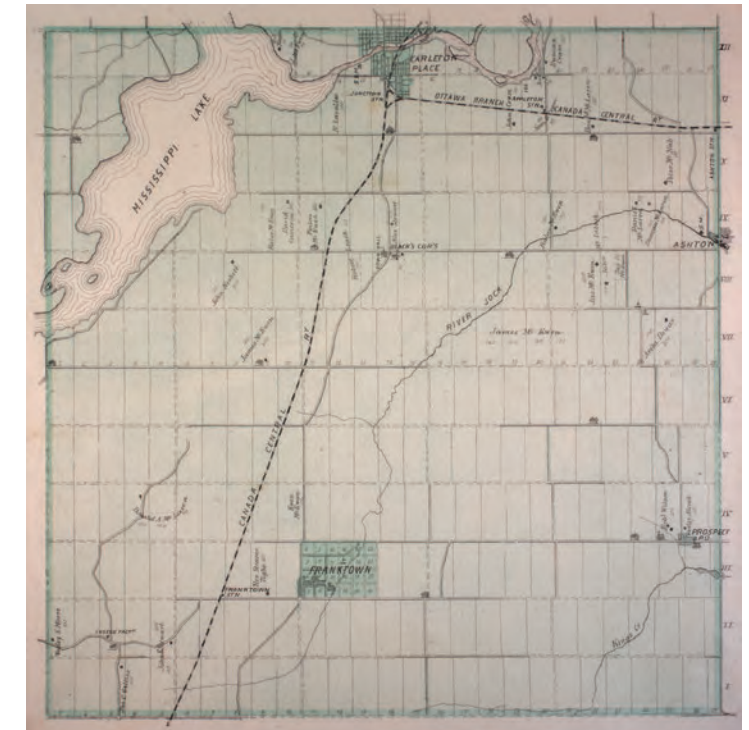


Postcard from from the late 1800's



OTHER RELIC OF THE GOOD OLD DAYS —This is another photo in the collection of Lorne McNeely of steam engines of the past. This photo was taken in 1921 and the engine was made about 1890. It was for power to crush Beckwith rock.

Lorne McNeely crushing rock in the Beckwith quarry. One of the largest crushers was a model produced by Taylor Engineering in 1919. It had a 60-inch (152-cm) receiving opening and remained in first place until Taylor produced the 72-inch (183-cm) gyratory crusher in 1969. It served as the world's biggest and only machine at that size until 2001.



This map from 1879 shows Mississippi Lake, Carleton Place, Franktown, Ashton, & Black's Corners.

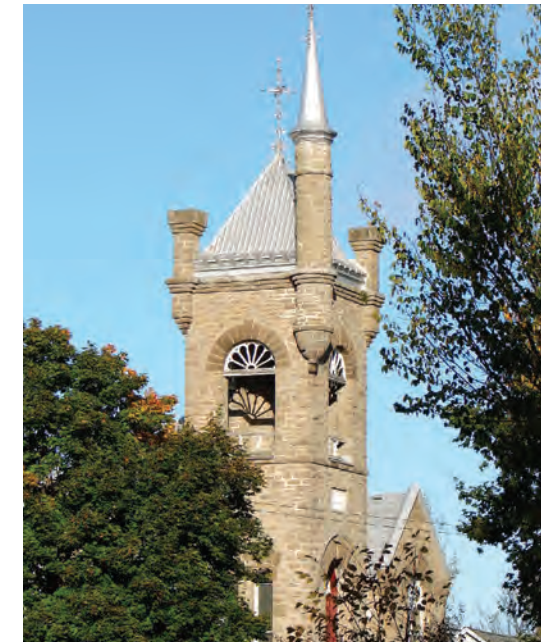
The Town of Carleton Place

Carleton Place is conveniently located on the renowned Mississippi River. Beautiful streetscapes, scenic trails and picturesque waterfront make this town one of a kind in Lanark County. It offers the conveniences of the city, with the friendliness of a small town. It's a community rich in history as it was settled in 1819 and saw several influential industries come into operation including a grist mill, lumber mills and the Findlay Stove Company. It was in 1829 that the area became formally known as Carleton Place. Today, Carleton Place boasts a population of 12,000 and growing. It's a family-oriented community with a variety of social and recreation opportunities to suit everyone. If you've been searching in Carleton Place for homes for sale, you've come to the right place. This family friendly community is just 20 minutes away from Kanata and hosts a mix of attractive, historic homes as well as many new homes from popular builders. Carleton Place is the perfect fusion of modern convenience with small town charm. Residents love being able to walk to local shops, restaurants and weekly farmers markets as well as having easy accessibility to big box stores available in the community and nearby. The 4-lane highway 7 connecting the Queensway is also attracting more and more people to the town as it's a quick commute to Ottawa.



The Township of Beckwith

The Township of Beckwith, which neighbours Carleton Place, was surveyed in 1816 and settlement started around 1817. The Township was named after Sir Thomas Sydney Beckwith (born in 1772 and died in 1831). When Beckwith was first established the only village was Morphy's Falls which is now known as the Town of Carleton Place. Carleton Place was later established as a separate municipality. The Township of Beckwith boasts 243 square kilometres of land mass. By December 2016, the population in Beckwith Township had grown to 7,644 full-time residents. Residents enjoy easy commutes to centres such as Ottawa, Smiths Falls, Perth and Carleton Place. The Township includes the Mississippi Lake and River, the Jock River, fertile farmland, wide open spaces, forests, well-planned subdivisions, protected wetlands and historical hamlets. The Township was even once considered as a possible site for the Nation's capital. This historical significance rests on the importance of Franktown as the mid-way point between Ottawa and the military establishment in Perth during the initial settlement of Lanark County. Villages and hamlets within the Township include Ashton, Blacks Corners, Franktown, Gillies Corners, Prospect, and Scotch Corners. Many residents have their cottages and summer homes along the Mississippi Lake, which provides easy access for summer recreation such as boating, camping, hiking, and great bicycle tours. Commercial and industrial ventures are as diverse and productive as the natural landscape. Lanark County is the maple syrup capital of Ontario and Beckwith partakes in the season's harvest. Beckwith boasts approximately 100 commercial businesses within the Township and has a progressive by-law that encourages home based small businesses to settle within the Township. Beckwith enjoys the services and amenities of the Town of Carleton Place for the northern part of the community and Smiths Falls for those in the south. It's also only 20 minutes away from Ottawa travelling east, or Perth if you are travelling west. Whether you're looking for residential or commercial opportunities, historical Beckwith can meet and exceed your dreams.



About BLD Homes

Brownlee Land Development (BLD Homes) is a local, family-owned business with experience in residential and commercial land development, property management, rental, condominium and house construction.

Our mission since 2005 has been to design and construct high-quality homes in Perth and now Carleton Place.

McEwen's Mill is our latest high-end subdivision that will feature a variety of upscale single-family bungalow and 2-storey homes.

Our Sub trades and material suppliers are all predominantly from the local Lanark County area to foster employment and reinvestment within the area.



A Message From The CEO

It's my pleasure to introduce you to this upscale, comfortable, and secure subdivision that you'll be proud to call home in the Beckwith/Carleton Place area. Beckwith is a fantastic township that offers many activities, rich history, convenient amenities, stellar restaurants, high quality health care and gorgeous nature views.

Its small size means everything is close by and our location offers quick convenient access to Highway #7, which leads east to Ottawa and west to Toronto. Despite its ease of access, once you drive into the McEwen's Mill community, you'll enter a quiet, picturesque setting of trees and serenity. McEwen's Mill offers all the amenities you'd expect in an upscale subdivision with close proximity to lovely trails, commuting convenience, estate lots and a lake next door.

We're incredibly excited for you to move into this luxury subdivision, to meet new friends and most importantly, to live safely. Thank you and all the best.

Brent Brownlee
Founder/CEO



Models

Each of our models are built to maximize aesthetic design and functionality. We have seven bungalow models due to their popularity, and three 2-storey models for large families. Each model is specifically placed on its chosen lot to get the most out of the home and the land including treed privacy, curb appeal and space. Our homes offer from 1700-3700+ Sq.Ft., a 3-car garage, a grand front entry door, energy star rated efficiency, an open concept kitchen, ample bedrooms, a generous size office/den, big windows, a paving stone walkway, a large basement, plenty of storage space and more!

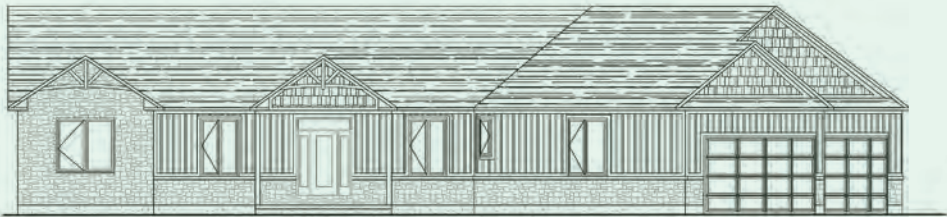


The Stewart



THE BRUNTON

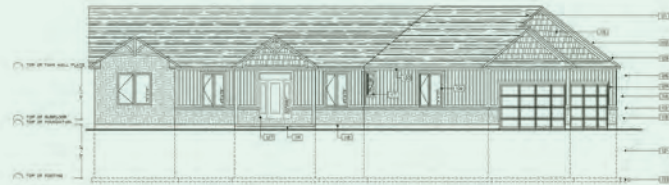
— 2460 SQ. FT.



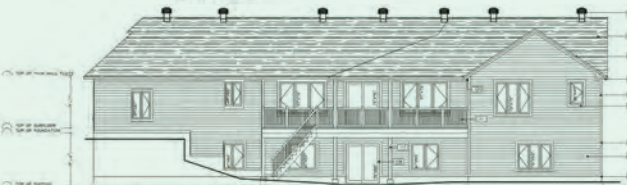
FRONT ELEVATION



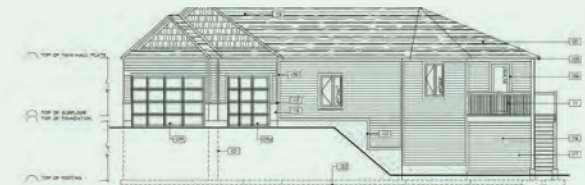
FRONT ELEVATION



RIGHT ELEVATION



FRONT ELEVATION



LEFT ELEVATION



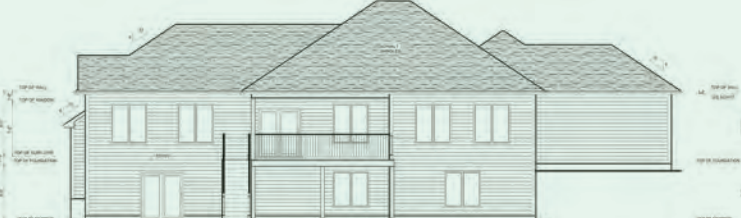
REAR ELEVATION

THE STEWART

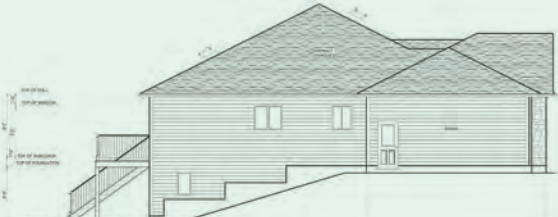
— 2376 SQ. FT.



RIGHT ELEVATION



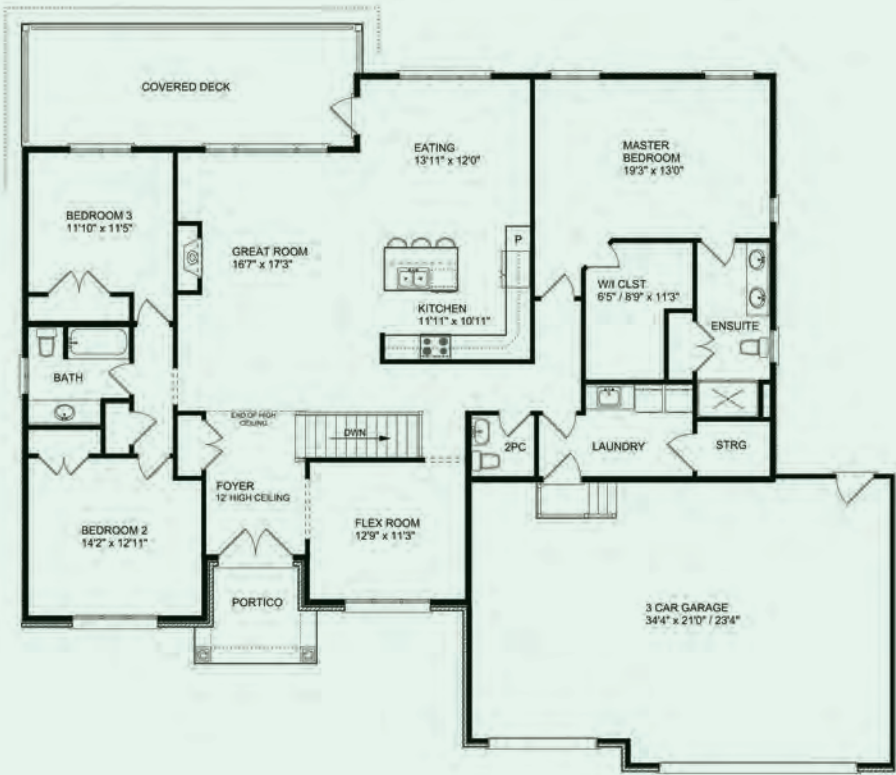
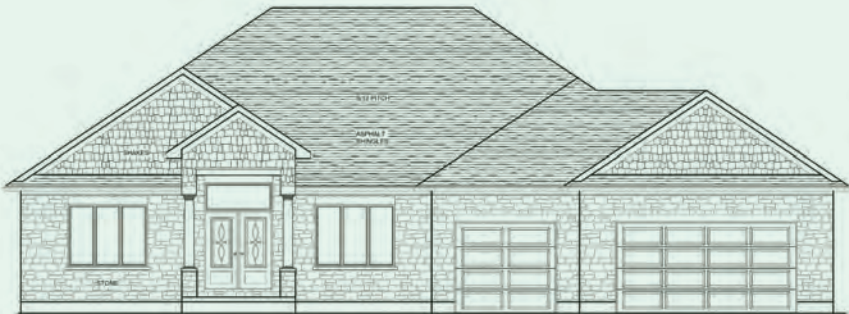
FRONT ELEVATION



LEFT ELEVATION

THE CLEARY

— 2290 SQ. FT.



FRONT ELEVATION



LEFT ELEVATION



RIGHT ELEVATION



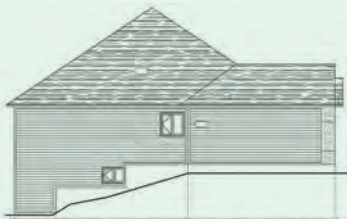
REAR ELEVATION



FRONT ELEVATION



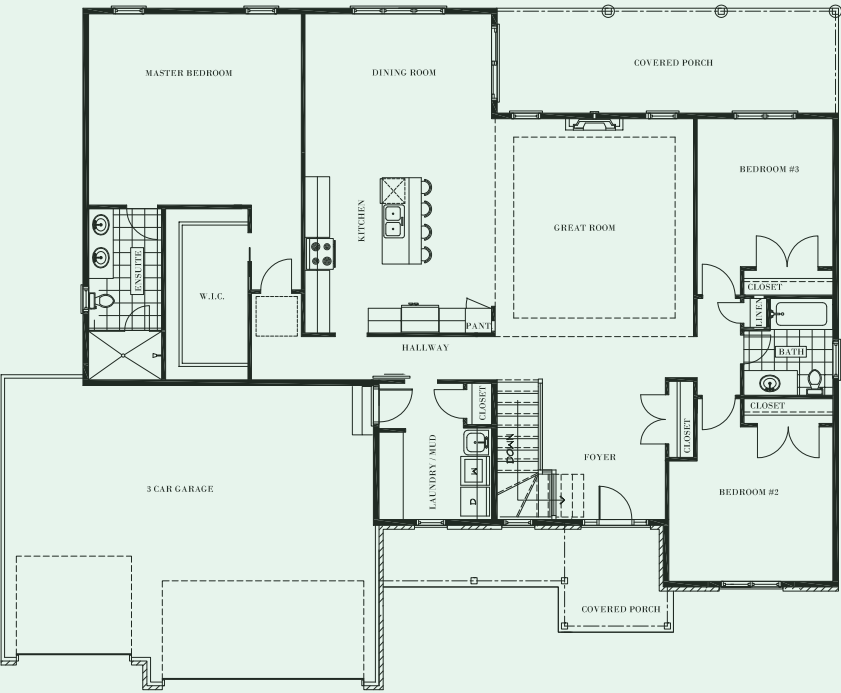
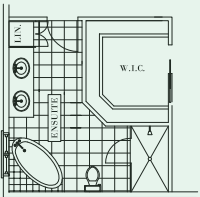
REAR ELEVATION



LEFT ELEVATION



RIGHT ELEVATION



THE BURGESS

— 2169 SQ. FT.

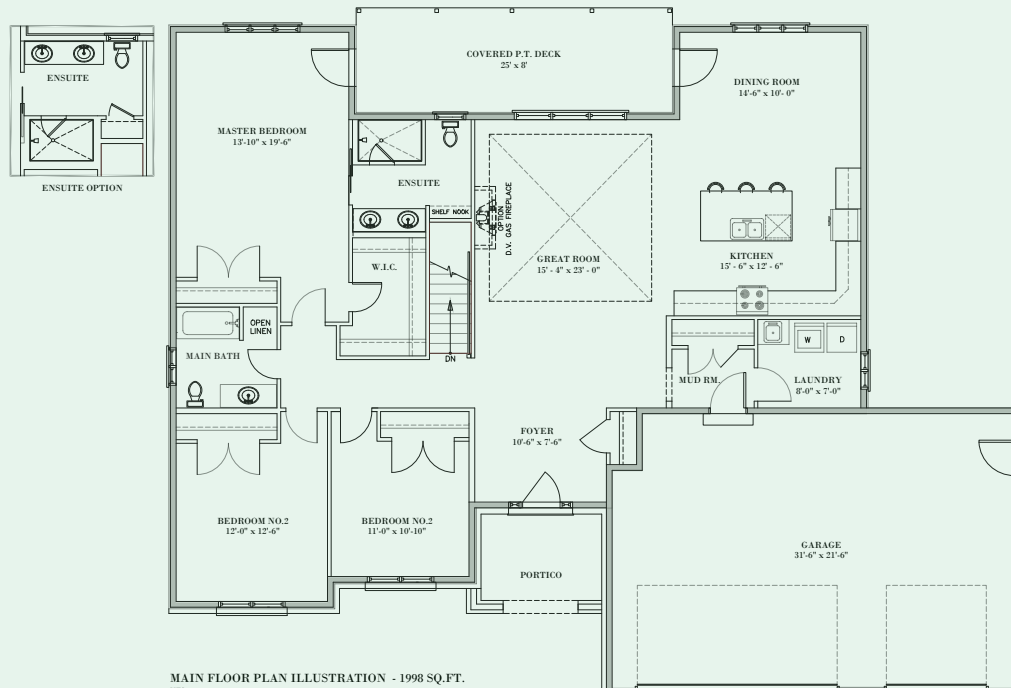


THE LANARK

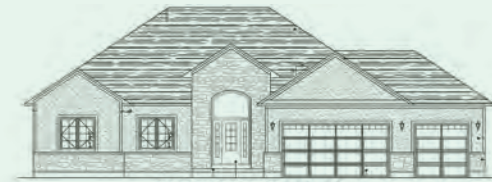
— 1998 SQ. FT.



FRONT ELEVATION ILLUSTRATION NTS



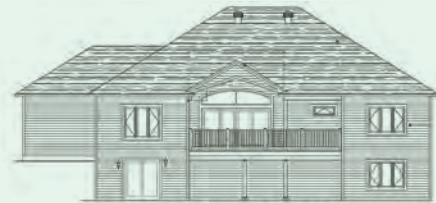
MAIN FLOOR PLAN ILLUSTRATION - 1998 SQ.FT.



THE LANARK IV
FRONT ELEVATION



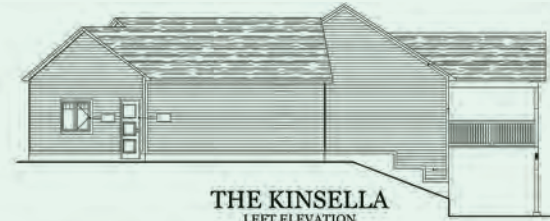
THE LANARK IV
LEFT ELEVATION



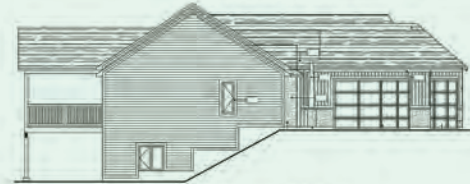
THE LANARK IV
REAR ELEVATION



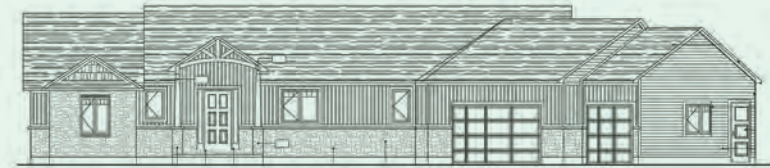
THE LANARK IV
LEFT ELEVATION



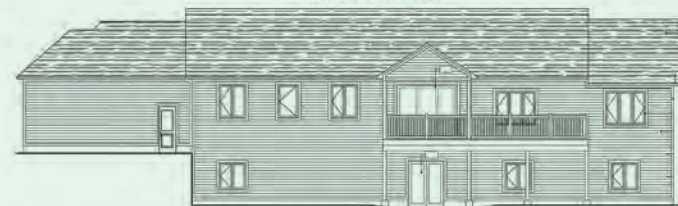
THE KINSELLA
LEFT ELEVATION



THE KINSELLA
RIGHT ELEVATION



THE KINSELLA
FRONT ELEVATION



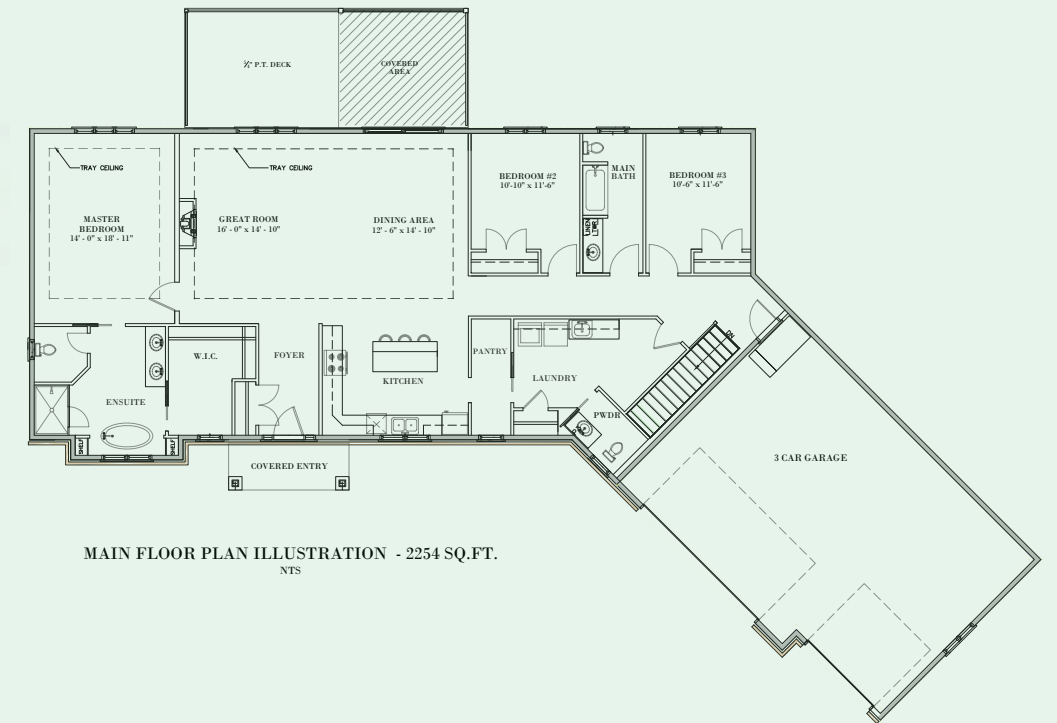
THE KINSELLA
REAR ELEVATION

THE KINSELLA

— 1955 SQ. FT.

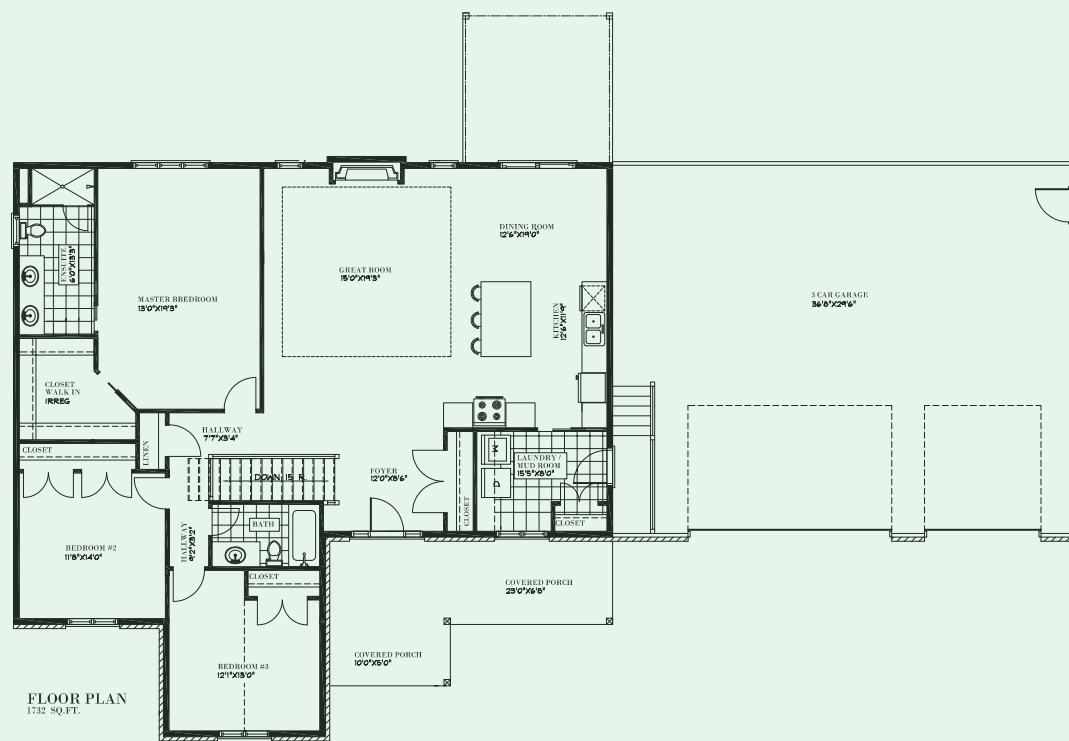
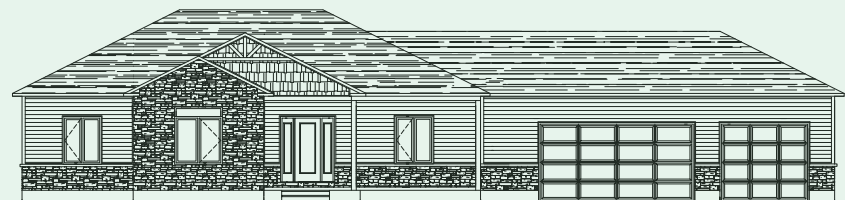


FRONT ELEVATION ILLUSTRATION

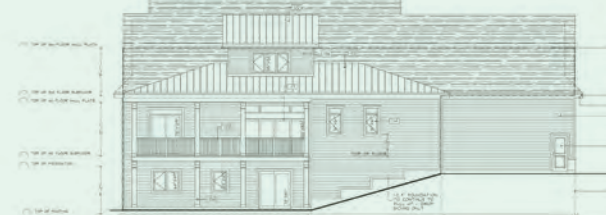
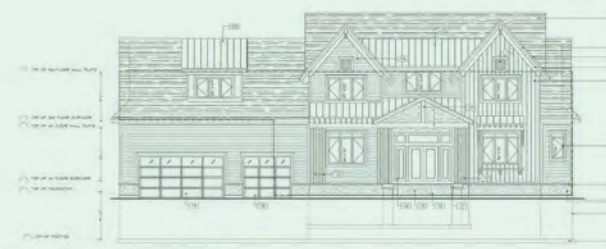
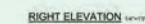
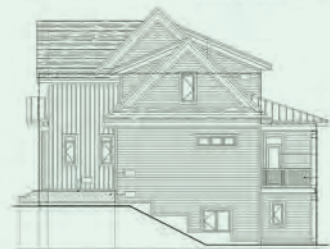
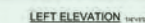
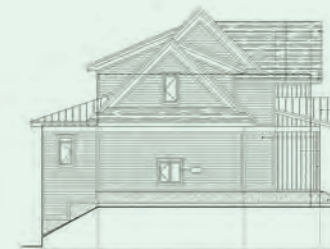
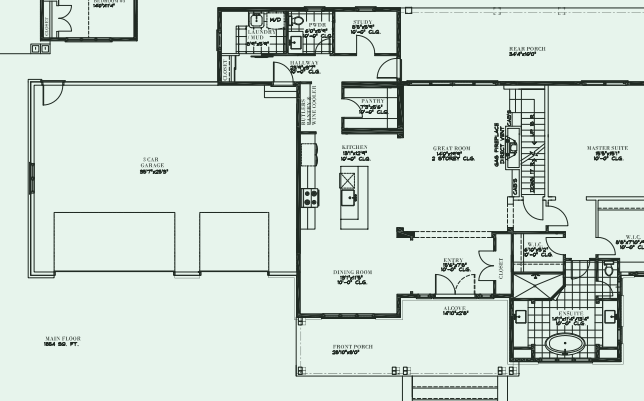
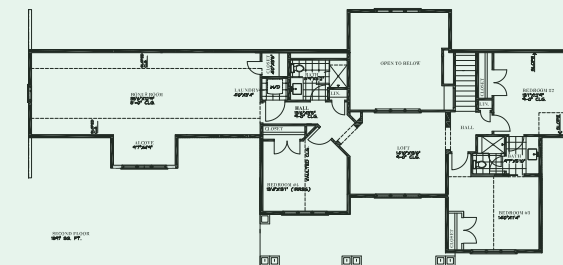
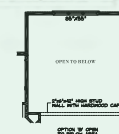
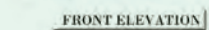
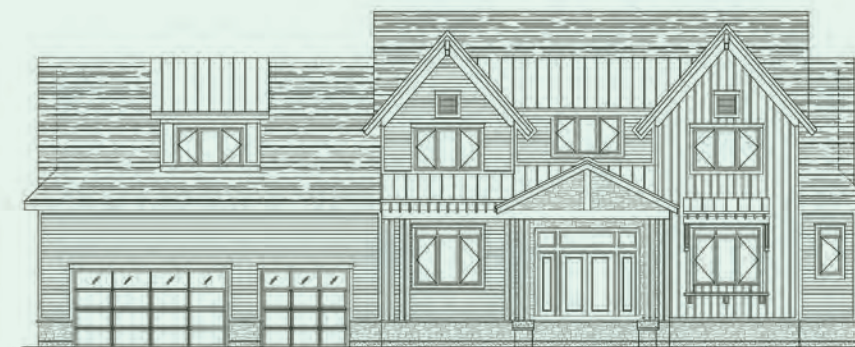


MAIN FLOOR PLAN ILLUSTRATION - 2254 SQ.FT.
NTS

— 1732 SQ. FT.



— 3751 SQ. FT.

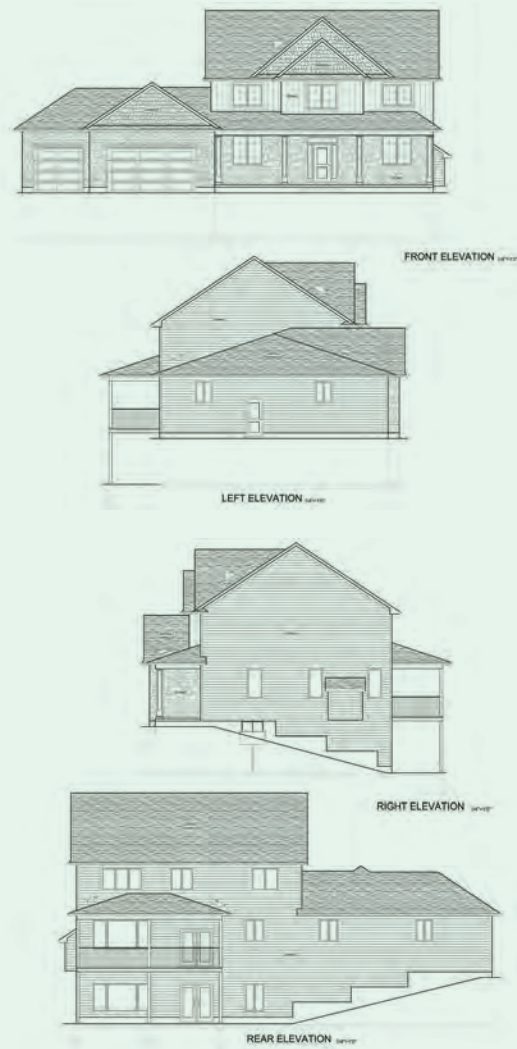
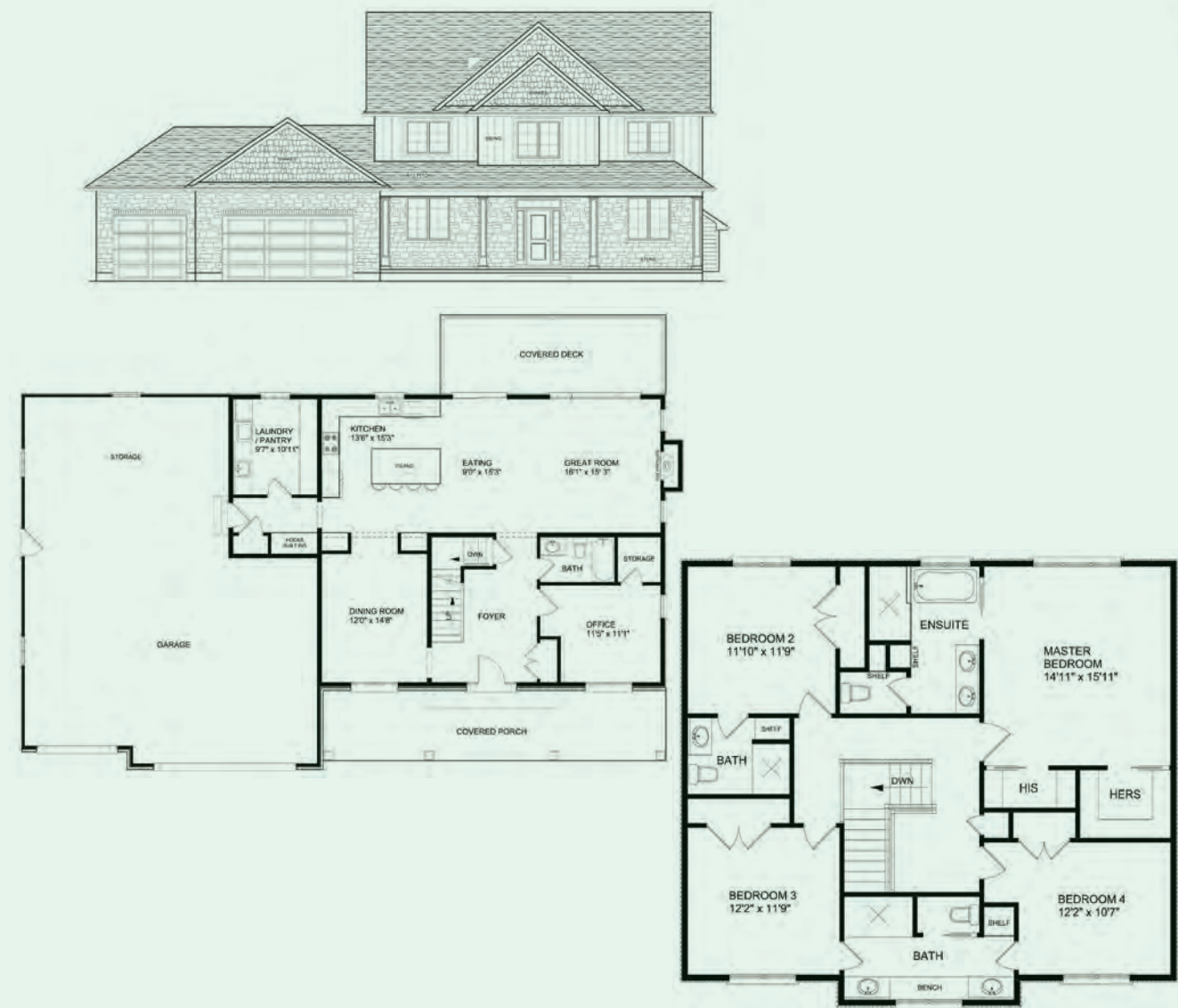


- | | |
|-----|-----------------------------|
| 132 | all those animals' families |
| 133 | about, against |
| 134 | about, because |
| 135 | about, with |
| 136 | about, with, against |
| 137 | about, with, against |
| 138 | about, with, against |
| 139 | about, with, against |
| 140 | about, with, against |
| 141 | about, with, against |
| 142 | about, with, against |
| 143 | about, with, against |
| 144 | about, with, against |
| 145 | about, with, against |
| 146 | about, with, against |
| 147 | about, with, against |
| 148 | about, with, against |
| 149 | about, with, against |
| 150 | about, with, against |
| 151 | about, with, against |
| 152 | about, with, against |
| 153 | about, with, against |
| 154 | about, with, against |
| 155 | about, with, against |
| 156 | about, with, against |
| 157 | about, with, against |
| 158 | about, with, against |
| 159 | about, with, against |
| 160 | about, with, against |
| 161 | about, with, against |
| 162 | about, with, against |
| 163 | about, with, against |
| 164 | about, with, against |
| 165 | about, with, against |
| 166 | about, with, against |
| 167 | about, with, against |
| 168 | about, with, against |
| 169 | about, with, against |
| 170 | about, with, against |
| 171 | about, with, against |
| 172 | about, with, against |
| 173 | about, with, against |
| 174 | about, with, against |
| 175 | about, with, against |
| 176 | about, with, against |
| 177 | about, with, against |
| 178 | about, with, against |
| 179 | about, with, against |
| 180 | about, with, against |
| 181 | about, with, against |
| 182 | about, with, against |
| 183 | about, with, against |
| 184 | about, with, against |
| 185 | about, with, against |
| 186 | about, with, against |
| 187 | about, with, against |
| 188 | about, with, against |
| 189 | about, with, against |
| 190 | about, with, against |
| 191 | about, with, against |
| 192 | about, with, against |
| 193 | about, with, against |
| 194 | about, with, against |
| 195 | about, with, against |
| 196 | about, with, against |
| 197 | about, with, against |
| 198 | about, with, against |
| 199 | about, with, against |
| 200 | about, with, against |



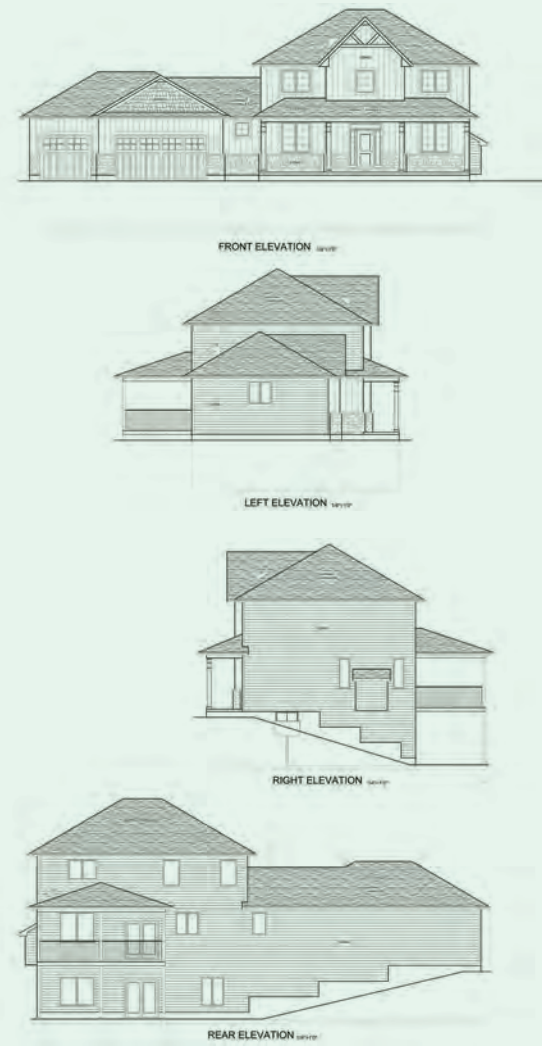
THE BECKWITH

— 2898 SQ. FT.



THE BROOKS

— 2364 SQ. FT.



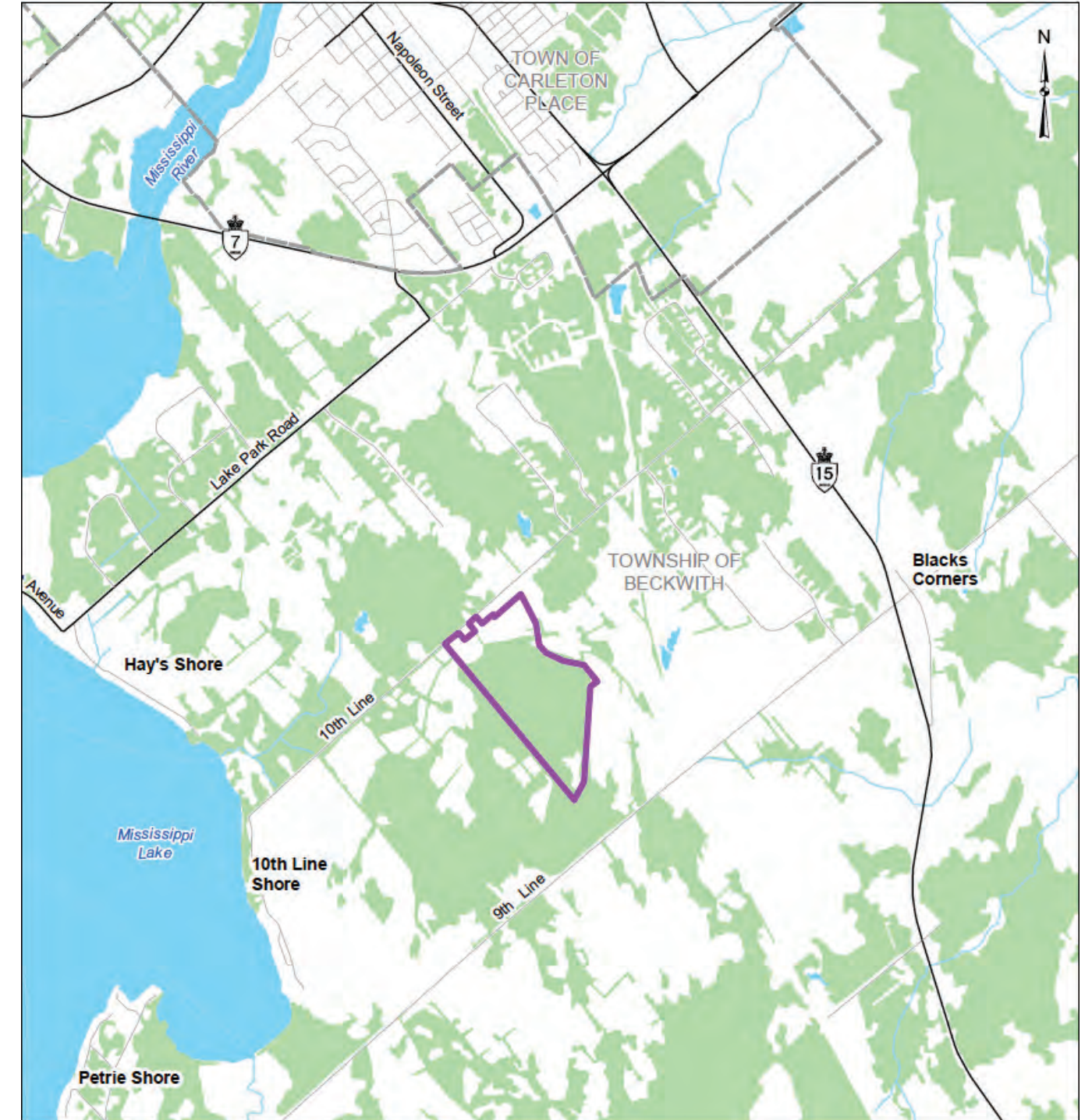
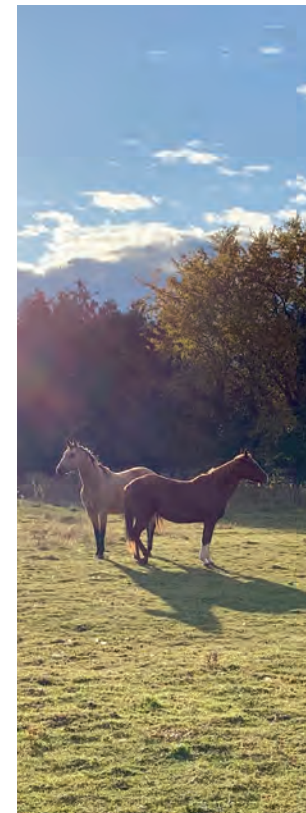
Home Features

Our stunning homes have many features that other builders charge as upgrades, such as high-end stone and Hardie cement board exterior siding, quartz countertops, custom manufactured solid wood kitchen cabinets, roughed in basement in-floor heating, walkout basements, floor to ceiling finished drywalled exterior basement walls, a high efficiency forced air furnace and AC. We also promote sustainability by exclusively building with energy efficient ICF (insulated concrete form). ICF foundations are highly resilient, and energy and resource efficient, so you save on utility costs and have a greener home that lasts a lifetime. That's the BLD Homes way. That's living, upgraded. Please see our full specifications list on our website for more information.



Location

Carleton Place/Beckwith is known for being on the historic Mississippi lake, but it also boasts many other fun and interesting activities. Explore the 7 Wonders of Carleton Place, enjoy the Heritage Haunted Walk during Halloween, feast your eyes on the scenery along the Mississippi Riverwalk Trail, Riverside Park, or Roy Brown Park, learn the stories of world-famous legends such as Captain Roy Brown, Stompin' Tom, and the Findlay Foundry through 16 hand-painted murals, try a prized craft beer by Stalwart Brewing Company or Braumeister Brewing Company, tickle your taste buds at the seasonal farmers' market, or visit Carleton Junction where the "friendship oven" can deliver stone-baked goodness. Treat a bride, and shop where good taste shines at Sindere's Bridal House or Renewed with Love Bridal Boutique, spend an afternoon visiting the Carleton Place and Beckwith Heritage Museum to find out more about Carleton Place's rich (and woolly) history, capture Carleton Place's photo worthy landmarks and learn interesting tidbits about your new community. For example, did you know that more than 3 million pounds of raw wool is graded each year in Carleton Place. Throughout its history, the Mississippi River has made Carleton Place an attractive place to settle, and it continues to draw people here today for its beauty, commerce and way of life. Launch your boat or canoe and take in the scenery. Take a stand-up paddle board lesson. Cast a line and catch a bass, walleye, or pike. The Mississippi Riverwalk nature trail is the perfect place for a bike ride or a walk with your dog. If you'd like to get around via public transportation/ transit, ride the LT community bus service provided. Or if you'd like to commute to Ottawa, there's the Classic Alliance Motorcoach that provides the commuter service between Carleton Place and the Nation's Capital.





MCEWEN'S MILL
RURAL LIVING. URBAN AMENITIES.



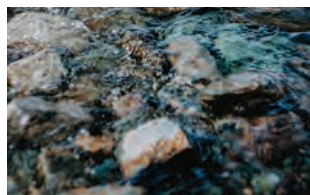
McEwen's Mill Site Plan



If you have any questions
please feel free to email us at
info@bldhomes.ca



Or visit our website
bldhomes.ca



Hours of Operation
Monday – Friday: [8am-4pm](#)

